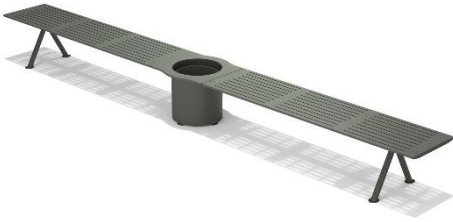




ARD-09 Planter connecting two benches at 180° angle 100% recycled material

Planter for joining two benches, creating a 180° angle.



Round metal structure, planter lid made from 100% recycled material, post-consumer waste from tetrapack cartons. With adjustable feet to adapt to uneven ground.

Metal parts with architectural-quality RAL 7009 epoxy green paint finish, highly resistant to corrosion. Cathaphoresis treatment is applied before painting to give maximum protection to the piece for outdoor use.

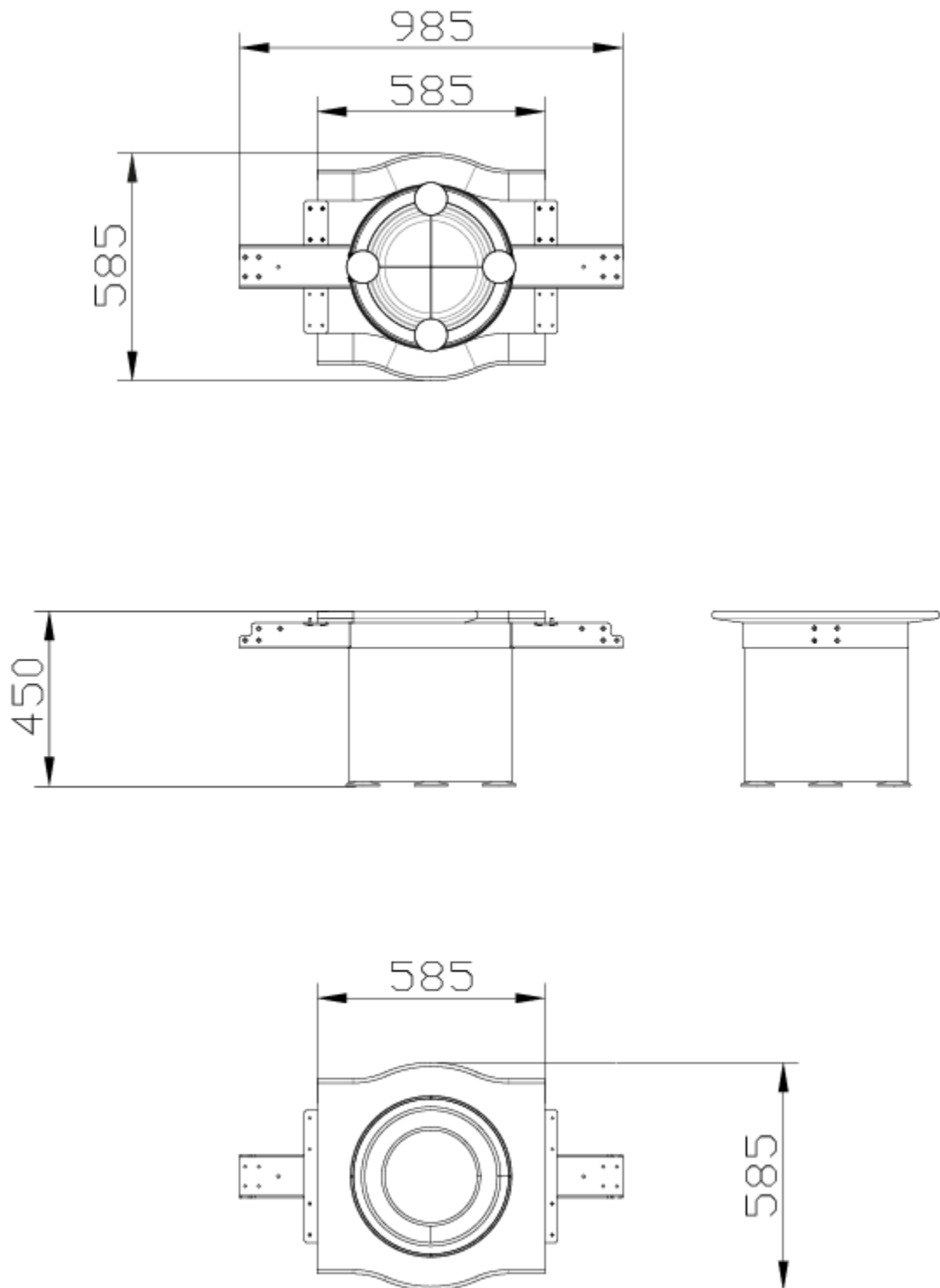
All materials are 100% recyclable at the end of the item's useful life.

Dimensions: 985 x 585 x 450 mm

Maintenance: No functional maintenance required. Cleaning recommended with a neutral product and damp cloth.

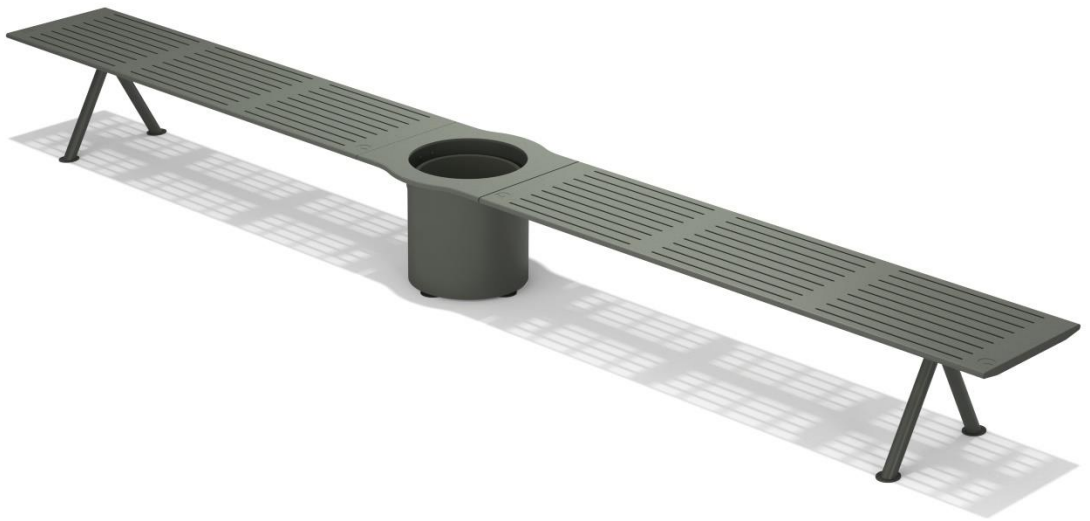


ARD-09 Planter connecting two benches at 180° angle 100% recycled material





ARD-09 Planter connecting two benches
at 180° angle 100% recycled material





Pol. Ind. Les Guixeres
Plàstic, 14
08915 - Badalona
T +34 933 950 905



www.unnom.es