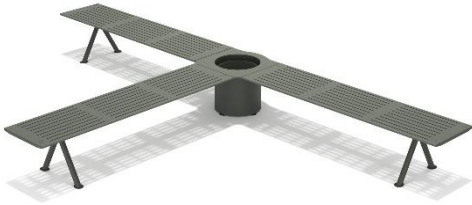




ARD-10 Planter for connecting 3 benches in a T-shape



Planter for joining three benches together, creating a T-shaped set.

Round metal structure, planter lid made from 100% recycled plastic, sourced from post-consumer tetrapack packaging.

With adjustable feet to adapt to any unevenness in the ground.

Metal parts with architectural-quality RAL 7009 epoxy green paint finish, highly resistant to corrosion. Cathaphoresis treatment is applied before painting to provide maximum protection for outdoor use.

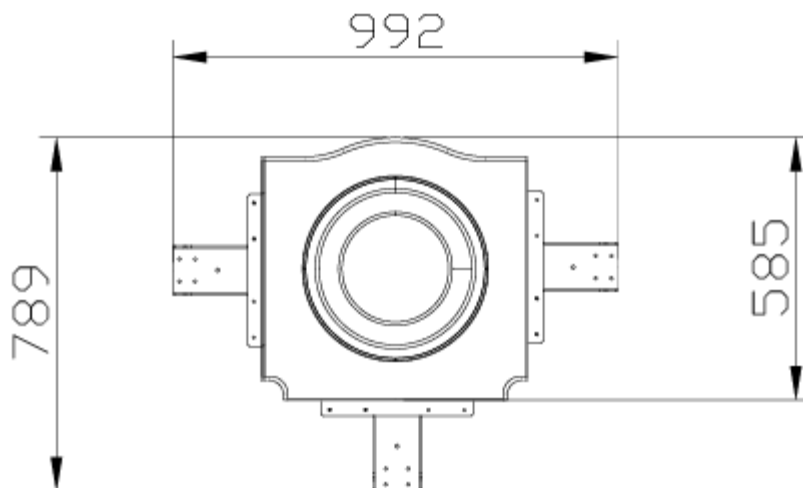
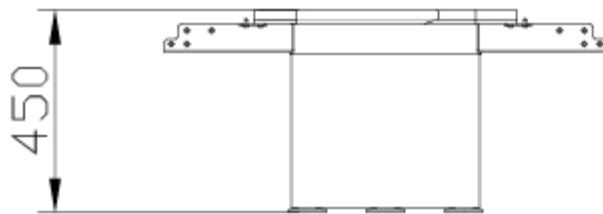
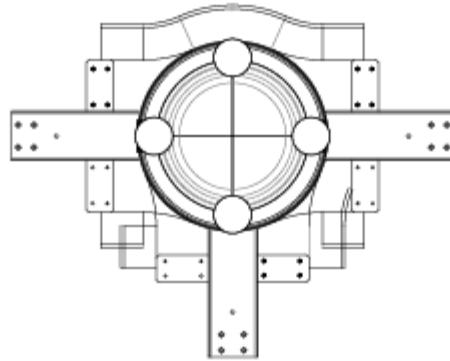
All materials are 100% recyclable at the end of the item's useful life.

Dimensions: 500 x 593 x 450 mm

Maintenance: No functional maintenance required. Cleaning recommended with a neutral product and damp cloth.

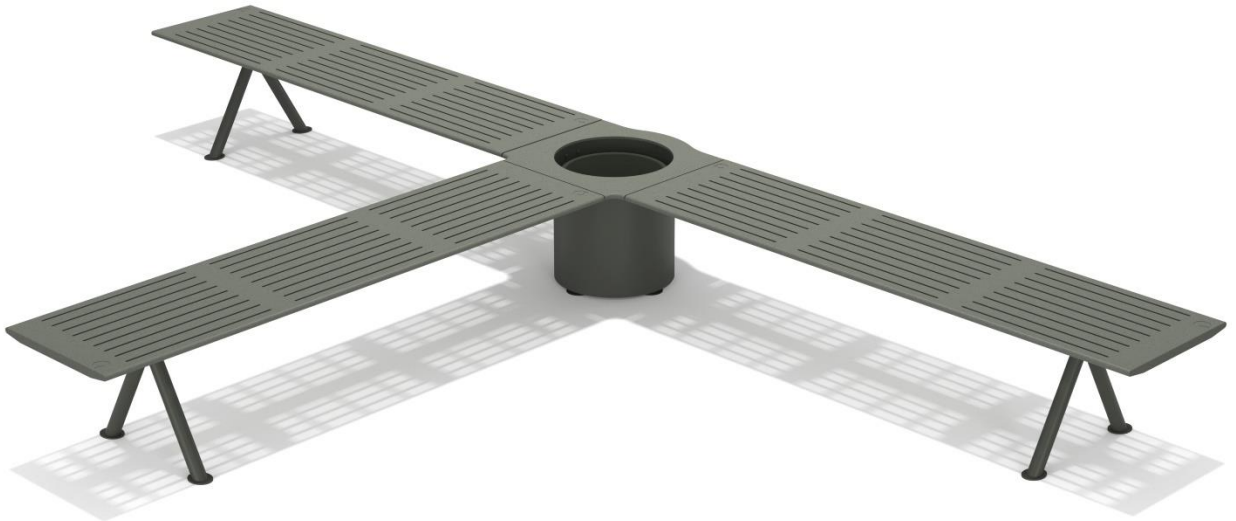


ARD-10 Planter for connecting 3 benches in a T-shape





ARD-10 Planter for connecting 3 benches in a T-shape





Pol. Ind. Les Guixeres
Plàstic, 14
08915 - Badalona
T +34 933 950 905



www.unnom.es