



BRICE-o2 Outdoor Recycling Bin



The elliptical-shaped bin is made of cold-rolled steel sheet, with a 3 mm top cover in a colour corresponding to the type of waste. The hinged front door is made of 1 mm steel sheet and is die-cut. The door is attached to the interior structure by a welded piano hinge. It is closed with a sliding lock mechanism with an 8 mm triangular cylinder.

Inside the opening, there is a steel ramp that prevents access to the contents of the bin.

Inside, there is a removable bag holder ring made of 3 mm steel plate.

The top has a curved sheet metal cover to prevent direct water ingress in case of rain.

All components are cataphoresis treated and then coated with architectural-grade epoxy paint for indoor or outdoor use.

Dimensions: 512 x 372 x 1157 mm.

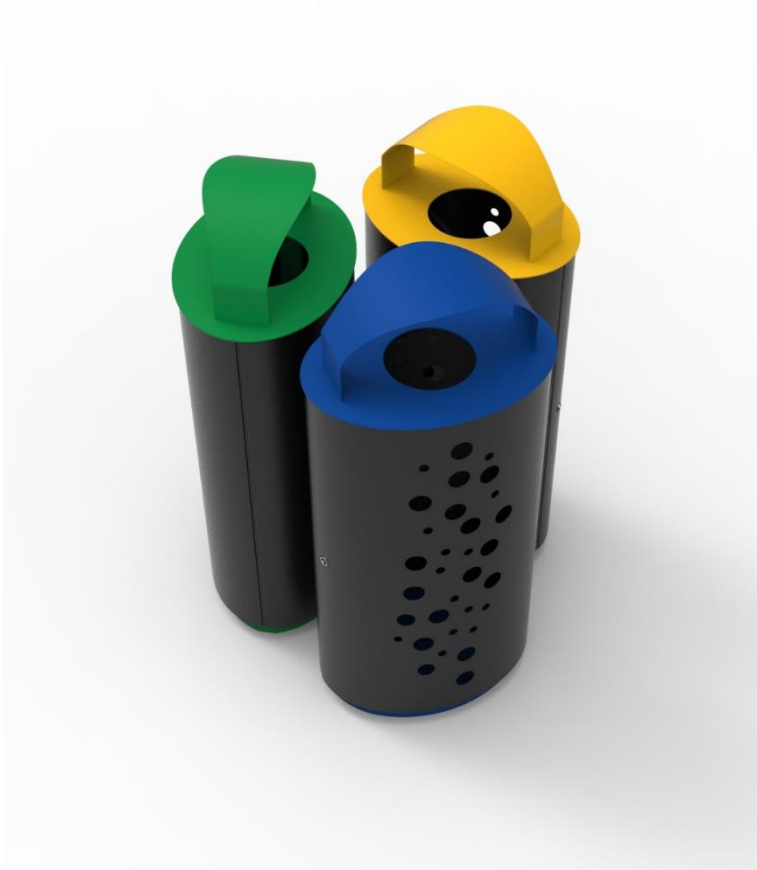
Capacity: 100 litres.

Maintenance: No functional maintenance required. Cleaning with a neutral product and damp cloth is recommended.

Fire resistance: Due to the characteristics of its all-metal materials, the container can be classified as V0.

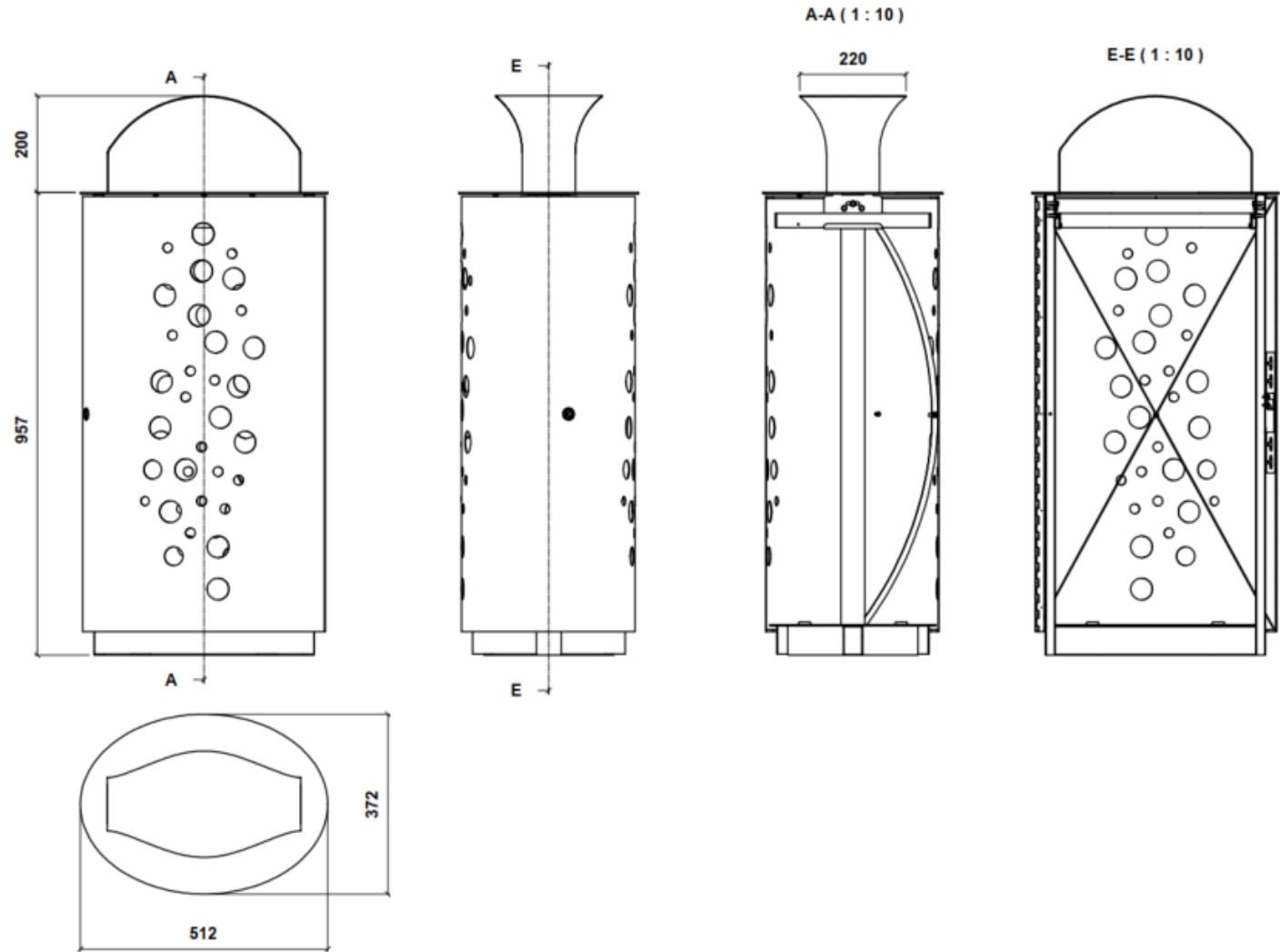


BRICE-o2 Outdoor Recycling Bin





BRICE-o2 Outdoor Recycling Bin





Pol. Ind. Les Guixeres
Plàstic, 14
08915 - Badalona
T +34 933 950 905



www.unnom.es