



## MOMO-o1 Outdoor Waste bin 50 litres

50-litre metal waste bin for indoor use.



Main body made of 1 mm stainless steel.  
Includes 4 sliders on the bottom to facilitate movement of the bin during maintenance operations.

1.5 mm steel head with a  $\varnothing 150$  mm circular hole.  
Hinged opening system for easy bag removal.

Inside there is a removable bag holder ring made of 2 mm stainless steel plate.

Vinyl can be added to each of the holes to indicate the different types of waste.

Architectural quality epoxy painted finish, highly resistant to corrosion.

**Dimensions:** 280 x 220 x 869 mm.

**Capacity:** 50 litres

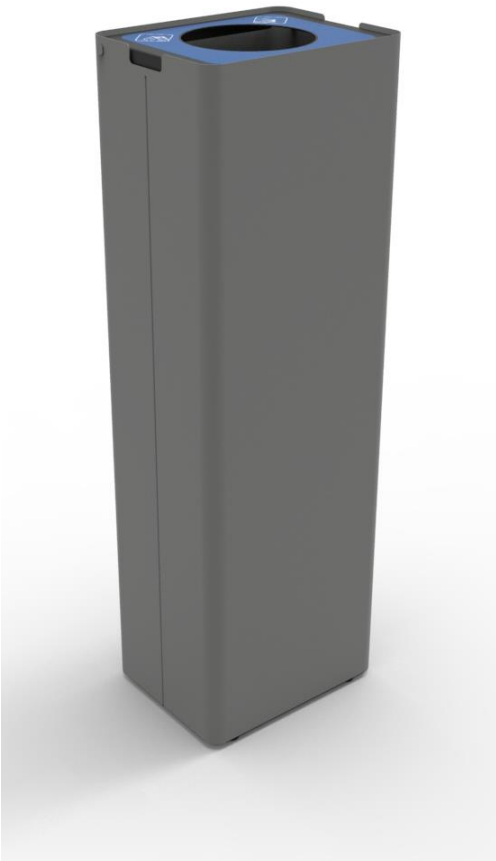


**Functional maintenance:** No functional maintenance required. Cleaning recommended with a neutral product and damp cloth.

**Fire resistance:** Due to the characteristics of its all-metal materials, the container can be classified as V0.

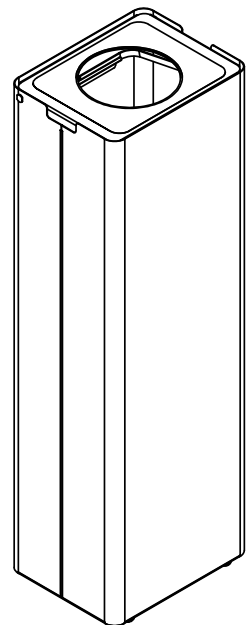
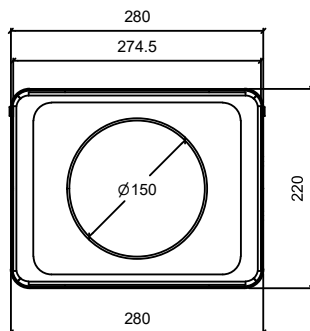
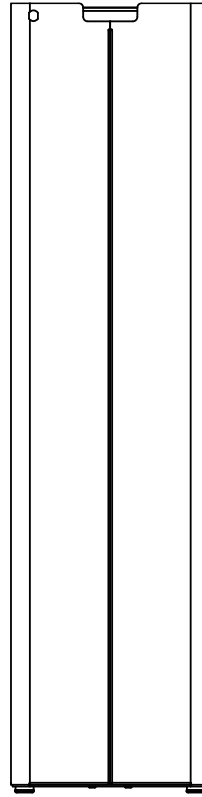
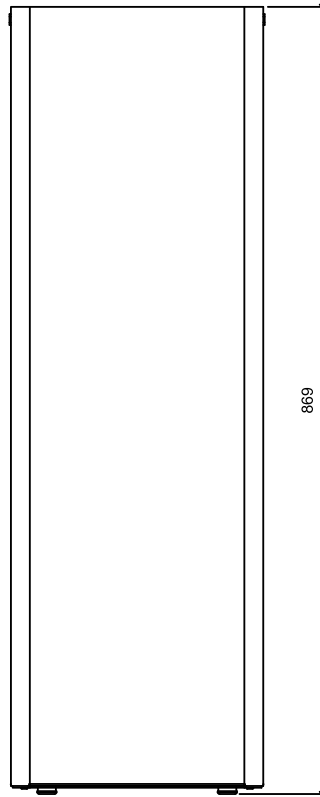


## MOMO-o1 Outdoor Waste bin 50 litres





# MOMO-o1 Outdoor Waste bin 50 litres





Pol. Ind. Les Guixeres  
Plàstic, 14  
08915 - Badalona  
T +34 933 950 905



[www.unnom.es](http://www.unnom.es)