



MOMO-o1 Waste bin 50 litres

Metallic waste bin for indoor use of 50 litres.



The main body made of 1 mm steel.

It includes 4 sliders at the bottom to facilitate movement of the bin during maintenance operations.

1.5 mm steel head with ø150 mm circular hole. Folding opening system to facilitate the removal of the bag.

Inside it is placed a removable bag-holder ring made of 2 mm steel plate.

Possibility of incorporating vinyl in each of the holes to indicate the different types of waste.

Architectural quality epoxy painted finish, highly resistant to corrosion.

Dimensions: 280 x 220 x 869 mm.

Capacity: 50 litres

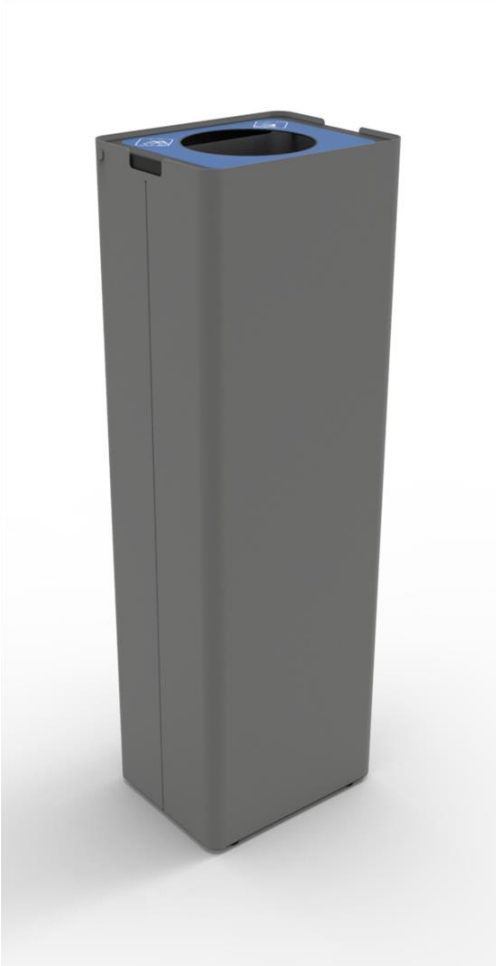
Functional Maintenance: It does not require functional maintenance. Recommended cleaning with a neutral product and a damp cloth.

Fire resistance: Due to the characteristics of its totally metallic materials, the container can be classified as V0.



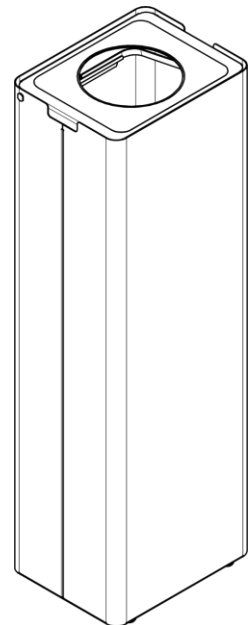
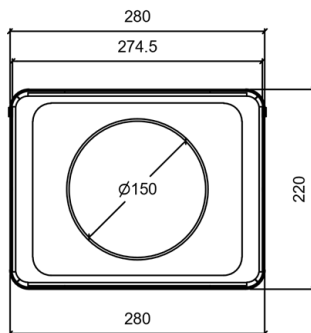
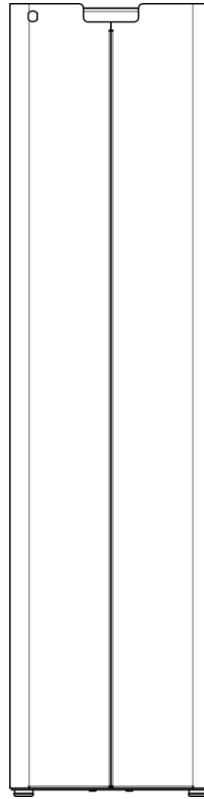
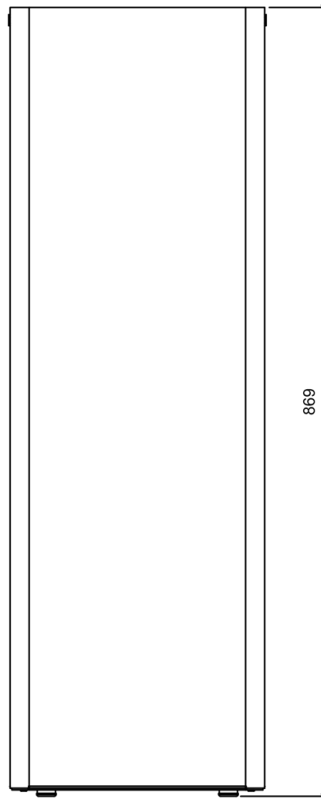


MOMO-o1 Waste bin 50 litres





MOMO-o1 Waste bin 50 litres





Pol. Ind. Les Guixeres
Plàstic, 14
08915 - Badalona
T +34 933 950 905



www.unnom.es