



MOMO-13 3-compartment waste bin



Large capacity metal waste bin for outdoor use, which can be fixed to the ground, allowing for the selective collection of 3 types of waste.

The main body is made of 1 mm stainless steel and is reinforced internally with two welded $\varnothing 14$ mm shafts. It has two feet that raise the bin off the ground.

Triple 1 mm stainless steel head with $\varnothing 150$ mm circular holes. Hinged opening system for easy bag removal.



Three removable plastic bins are placed inside.

Vinyl stickers are incorporated into each of the holes in the head to indicate the different types of waste.

Architectural-quality epoxy painted finish, highly resistant to corrosion.

The bin is designed with materials suitable for outdoor use.

Dimensions: 1240 x 340 x 800 mm.

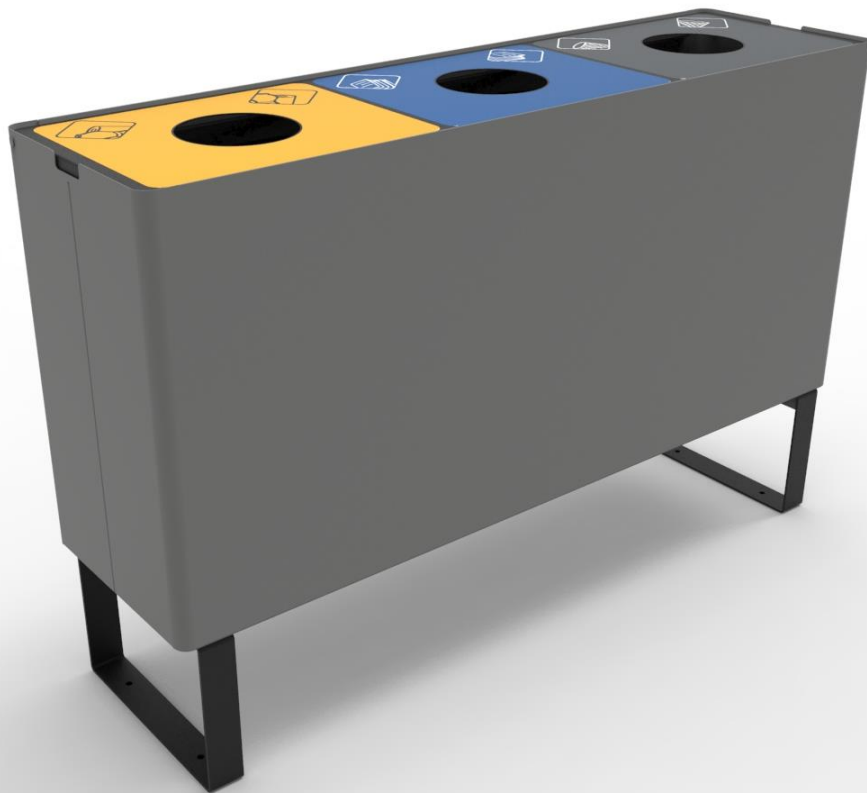
Capacity: 117 litres (39+39+39 l.)

Functional maintenance: No functional maintenance required. Cleaning recommended with a neutral product and damp cloth.



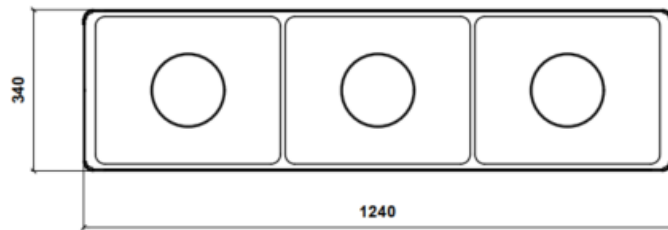
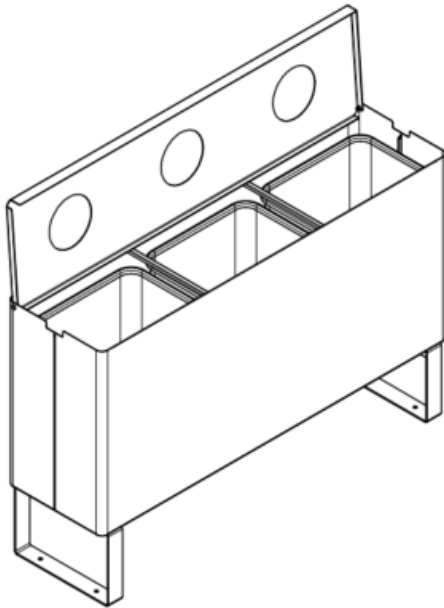
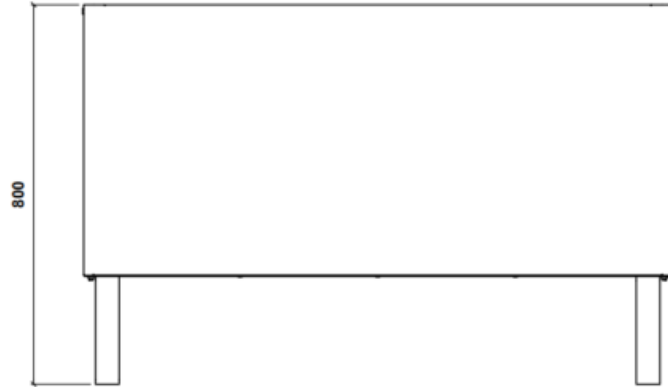
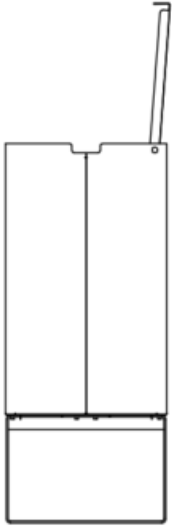


MOMO-13 3-compartment waste bin





MOMO-13 3-compartment waste bin





Pol. Ind. Les Guixeres
Plàstic, 14
08915 - Badalona
T +34 933 950 905



www.unnom.es