



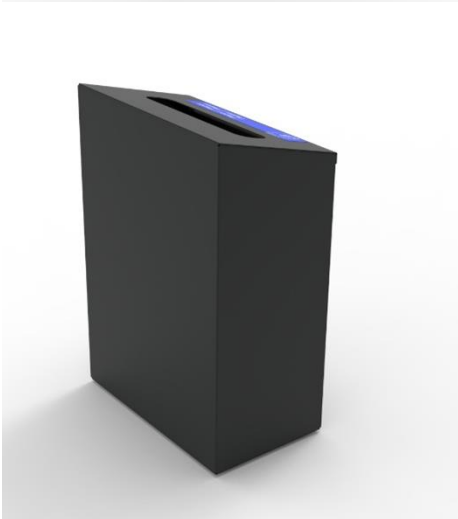
NALA-12 90-litres waste bin with a narrow top opening and transparent door



Large capacity rectangular metal bin with transparent door to view the interior content. Possibility of placing concatenated or forming islands for selective collection.

Body made of steel with folding on all sides to give rigidity to the assembly.

Steel door with clear polycarbonate window. It has a compression lock and is attached to the body by means of a piano-type hinge to facilitate its opening and, in turn, the removal of the inner bag.



It incorporates a removable bag-holder ring inside.

Head with an inclination of 15° with respect to the ground to prevent the user from depositing any waste on the perimeter of the head.

The head has a 350 x 77 mm rectangular hole and waste identification vinyl.

All the element finished in epoxy paint colour to be determined.



Dimensions: 500 x 302 x 740 mm.

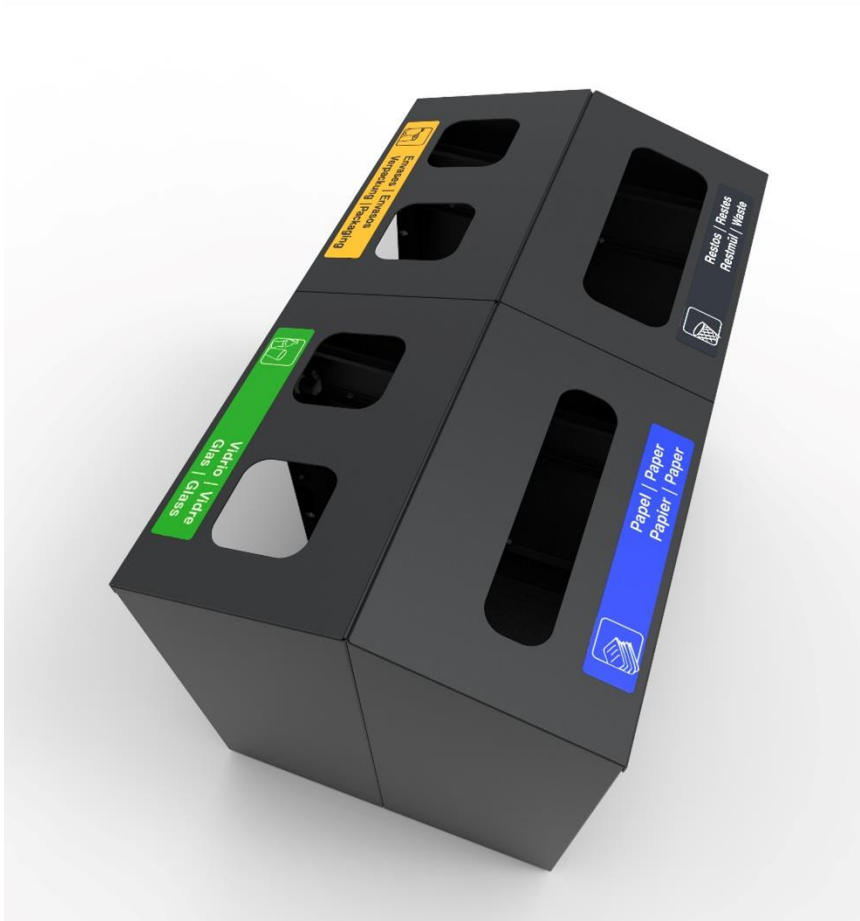
Capacity: 90 litres

Functional Maintenance: It does not require functional maintenance. Recommended cleaning with a neutral product and a damp cloth.

Fire resistance: Due to the characteristics of its totally metallic materials, the container can be classified as V0.

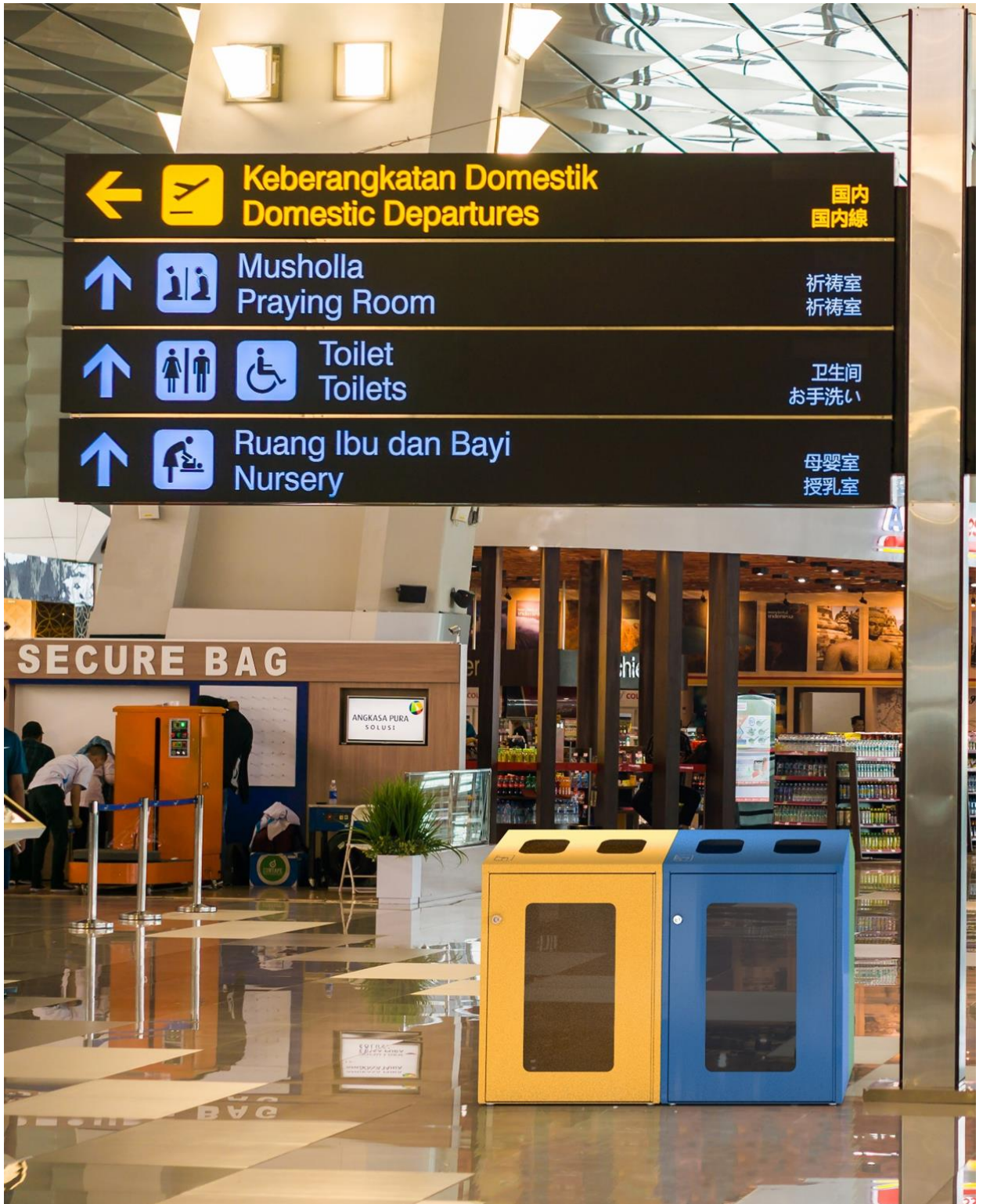


NALA-12 90-litres waste bin with a narrow top opening and transparent door



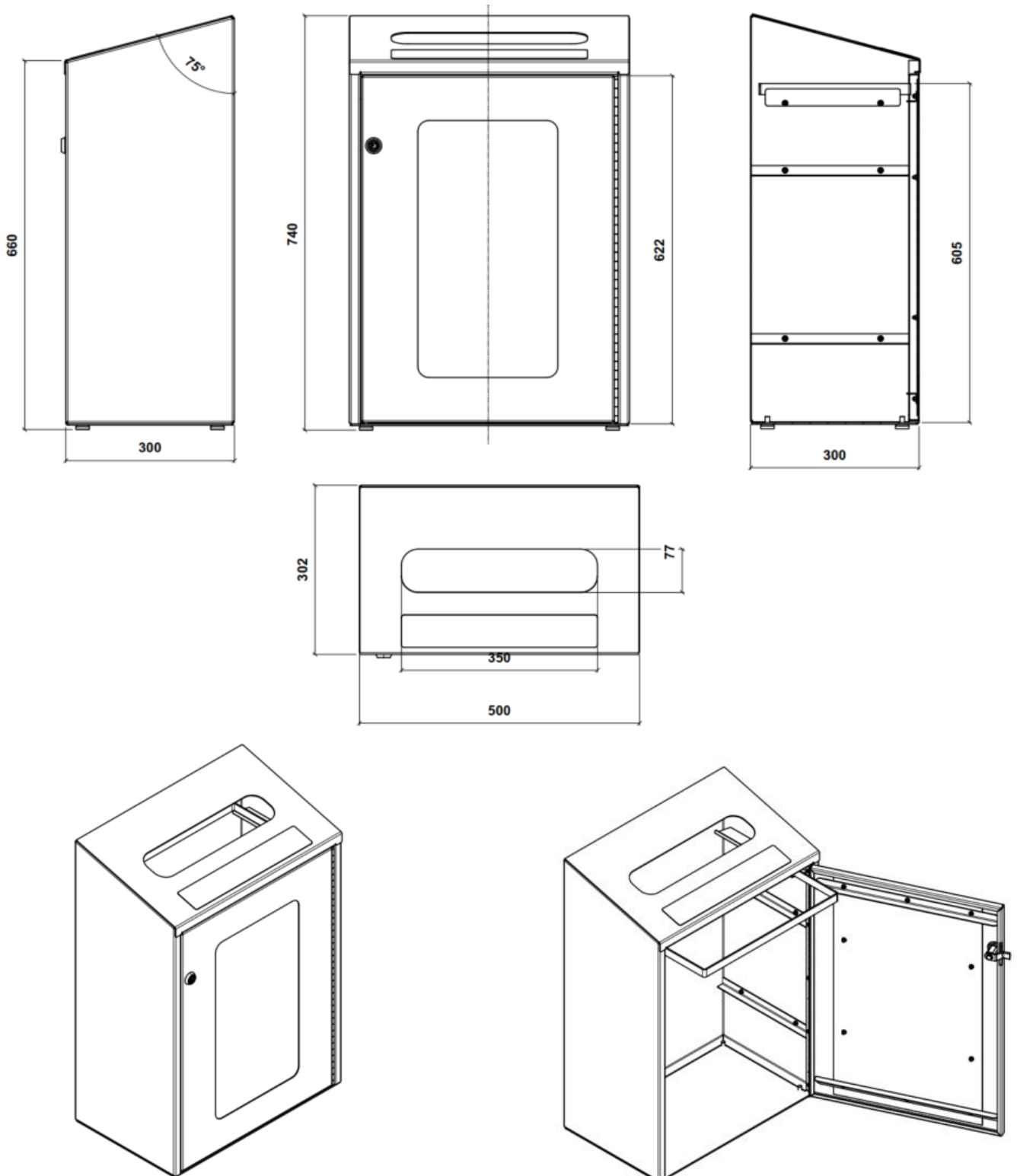


NALA-12 90-litres waste bin with a narrow top opening and transparent door





NALA-12 90-litres waste bin with a narrow top opening and transparent door





Pol. Ind. Les Guixeres
Plàstic, 14
08915 - Badalona
T +34 933 950 905



www.unnom.es