



VISNU-04 Fixed floor ashtray

Floor-standing ashtray for fixing to the floor.

Ashtray body made of steel with a welded support on the top to house the removable ashtray made of satin-finished stainless steel.

Body fixed to a structure made of aluminium plate and with 4 holes in its lower part that allow it to be anchored to the floor.

High-resistance epoxy paint finish for exteriors in black Ral 9005 textured colour.

Dimensions: 401 x 141 x 860 mm.

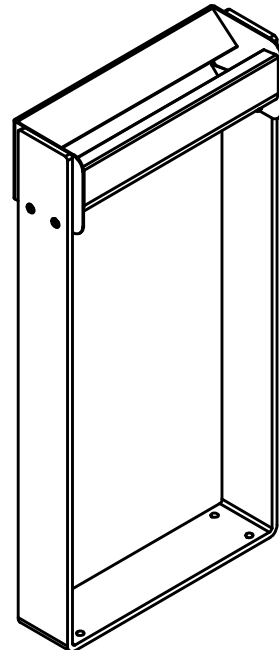
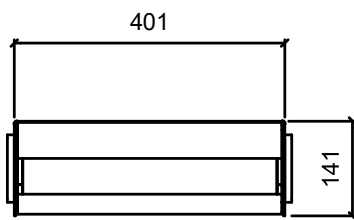
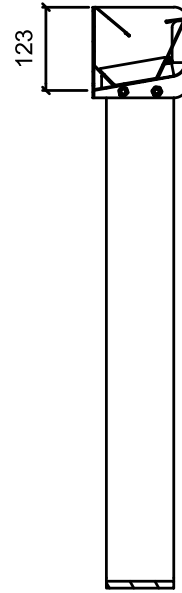
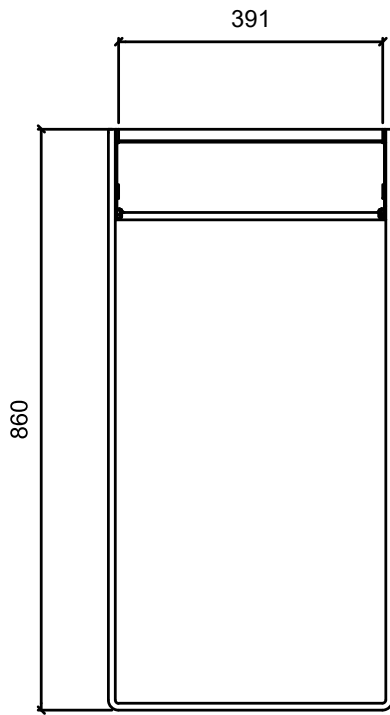
Maintenance: No functional maintenance required. Recommended cleaning with a neutral product and a wet rag.

Fire resistance: Due to the characteristics of its all-metal materials, the container can be classified as V0.





VISNU-04 Fixed floor ashtray





Pol. Ind. Les Guixeres
Plàstic, 14
08915 - Badalona
T +34 933 950 905



www.unnom.es